

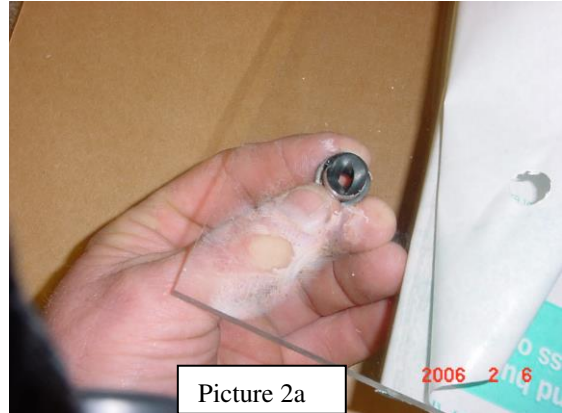
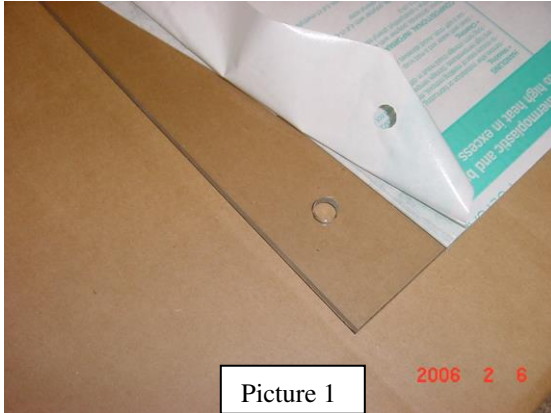


**Installation Instructions for CoolFlo Windshield with Fast Clamps for Polaris Ranger
2010+ 400, 2011 500, 500 crew, 2010+ EV, Ranger 800 Midsize
TA010SHLDFC-PR400500EV**

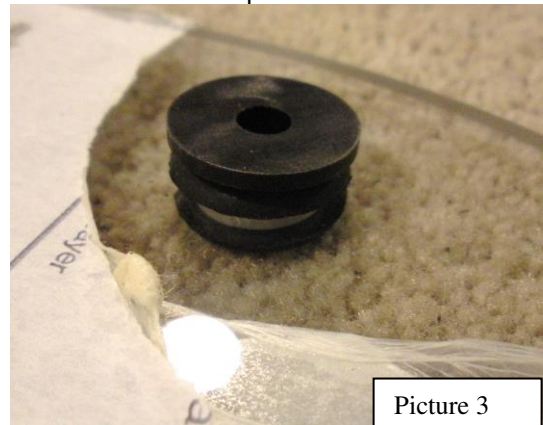
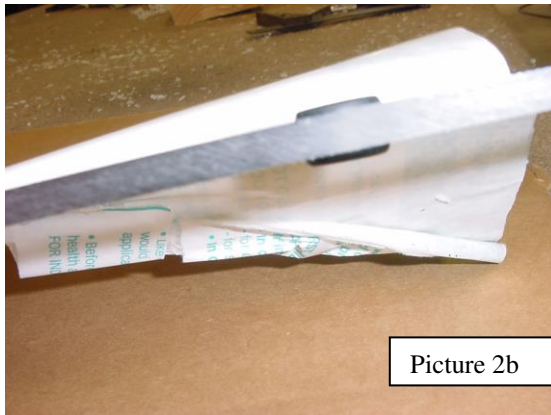
Warnings and Product Liability Disclaimer

This product is intended to be used as a cosmetic accessory under normal equipment operation and should not be depended upon or used as a safety device. Manufacturer assumes no liability for personal injury or equipment damage as the result of use or installation of this accessory. User assumes all risk. User should carefully read all instructions prior to installation.

- A. Carefully lay upper and lower windshield panels on flat surface; peel back the protective sheeting around the outer edges only enough to reveal the pre-drilled mounting holes. Do not peel the protective sheeting completely at this time! See picture 1.

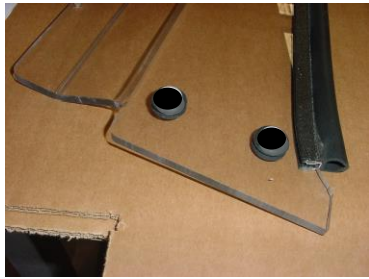


- B. Insert supplied rubber grommets into the pre-drilled holes. See picture 2a. Properly installed, the grommets' shoulder edges are uniform on both sides of the windshield. See picture 2b.



- C. Place large black plastic sleeve spacers with flanged edge into each rubber grommet inserted in the windshield panel. Flange goes on the front (exterior) side of the windshield. See picture 3. Locate the stick-on upper joint trim: this serves as a cushion between the two windshield panels and has a thick edge and a thin edge. Apply upper stick on joint trim to **inside** upper edge of lower panel turning its thick edge to the top. Apply evenly along the upper edge of lower panel. Avoid stretching during application. See picture 3B and 3C.
- D. Peel back the protective coating slightly at the top of the upper windshield. Install the two (5") side track bulb seals on the upper portion of the windshield so the bulb seal rests horizontally on the upper cage bar. See picture below.





Picture 3A



Picture 3B

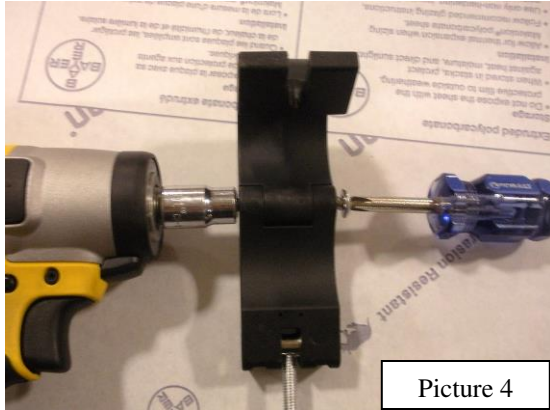


Picture 3C

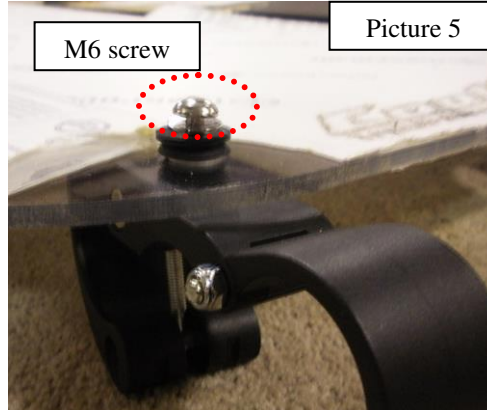


Picture 3D

- E. Install push-on edge trim gasket to the bottom contour cut edge of the lower windshield panel. Roll on by hand as shown in picture 3D. If you need to, carefully tap on with soft hammer.
- F. Tighten hinge joints on all Trail Armor Fast Clamps enough to where the screws grab the nylock nuts but the clamps will still freely open and close. See Picture 4.



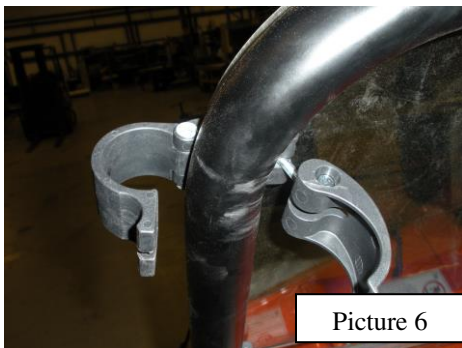
Picture 4



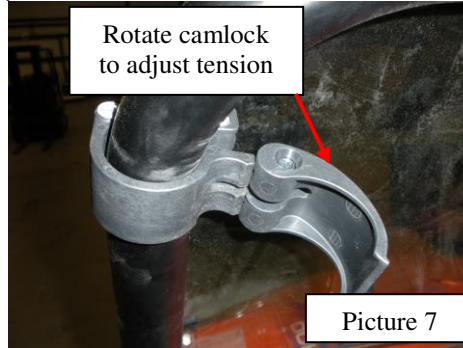
M6 screw

Picture 5

- G. Install Trail Armor Fast Clamp with the hinge tightened in step E to the interior/inside of the upper and lower windshield panels. Secure with M6 screws. See Picture 5. Tighten until rubber grommet inside the windshield's pre-drilled holes has pressure. **Do not overtighten! If you overtighten, you will pull out the brass insert and break the black spacer with the flanged edge.**
- H. With assistance, position upper windshield panel where the top of the panel is flush with roll cage at the top and sides. Secure Fast Clamps. Position bottom panel of windshield over weld on lower roll cage. Clamp into place as shown in Pictures 6–9. Rotate camlock clockwise to adjust tension on your roll cage. Position upper windshield panel where the top of the panel is flush with roll cage at the top and sides. Secure Fast Clamps. See Picture 10 for final install.

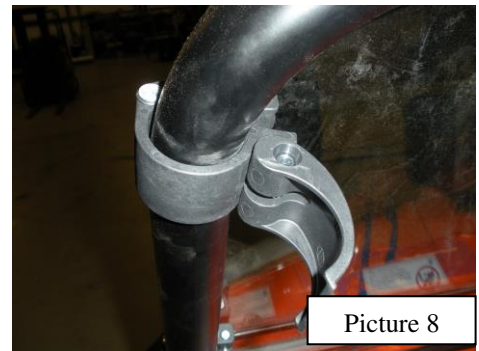


Picture 6

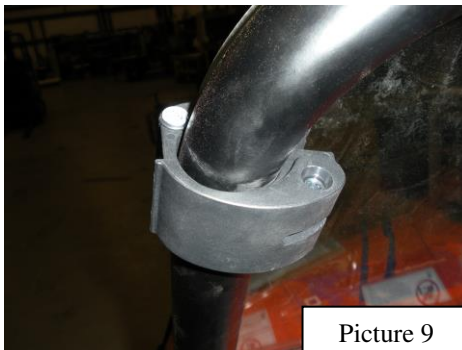


Rotate camlock to adjust tension

Picture 7



Picture 8



Picture 9



Picture 10