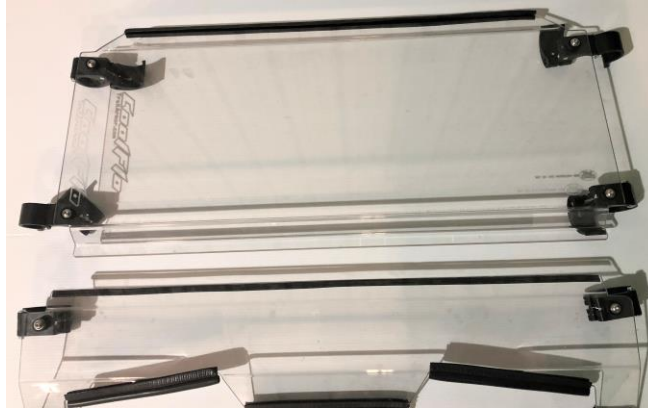




Installation Instructions for CoolFlo Windshield with Fast Clamps
for the Polaris RZR XP 1000 and RZR4 XP 1000
TA010SHLDFC-RZR1000-19

Warnings and Product Liability Disclaimer

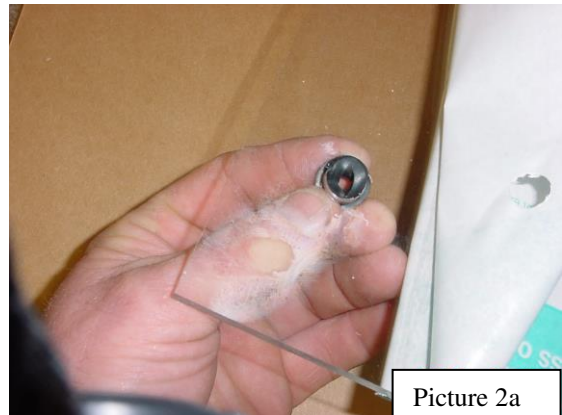
This product is intended to be used as a cosmetic accessory under normal equipment operation and should not be depended upon or used as a safety device. Manufacturer assumes no liability for personal injury or equipment damage as the result of use or installation of this accessory. User assumes all risk. User should carefully read all instructions prior to installation.



- A. Carefully lay upper and lower windshield panels on flat surface; peel back the protective sheeting around the outer edges only enough to reveal the pre-drilled mounting holes. Do not peel the protective sheeting completely at this time! See picture 1.



Picture 1

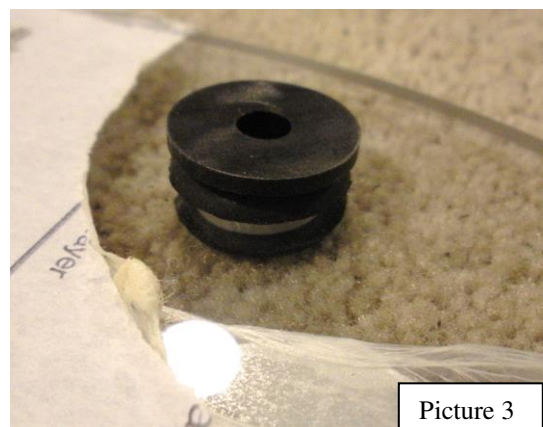


Picture 2a

- B. Insert supplied rubber grommets into the pre-drilled holes. See picture 2a. Properly installed, the grommets' shoulder edges are uniform on both sides of the windshield. See picture 2b.

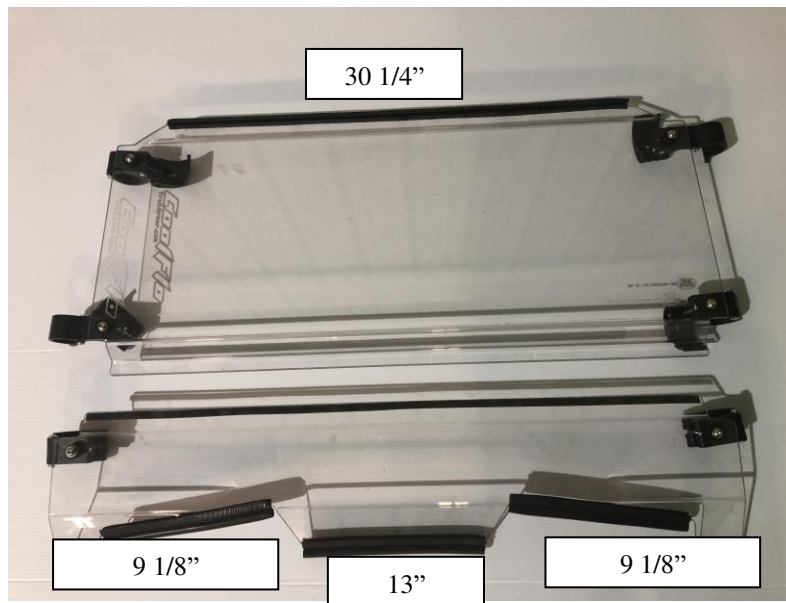
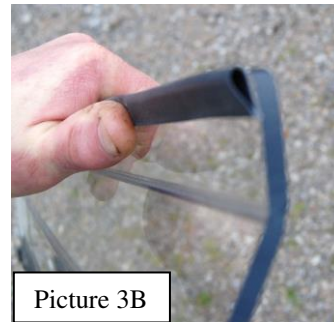


Picture 2b

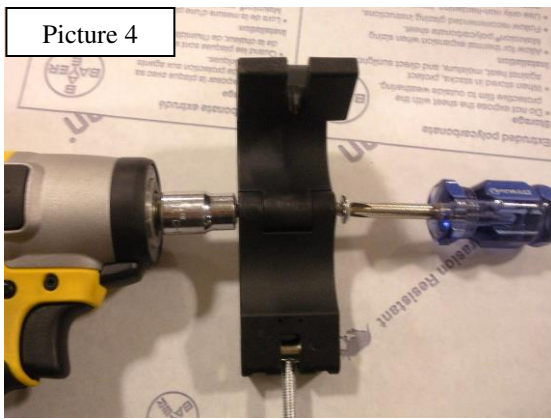


Picture 3

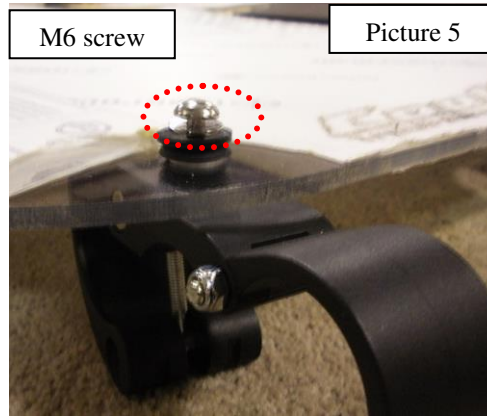
- C. Place large black plastic sleeve spacers with flanged edge into each rubber grommet inserted in the windshield panel. Flange goes on the front (exterior) side of the windshield. See picture 3. Locate the stick-on upper joint trim: this serves as a cushion between the two windshield panels and has a thick edge and a thin edge. Apply upper stick on joint trim to **inside** upper edge of lower panel turning its thick edge to the top. Apply evenly along the upper edge of lower panel. Avoid stretching during application. See picture 3A and 3B.



- D. Locate the 3 push-on edge trim gaskets. See Picture above. There are two 9 1/8" pieces and one 13" piece. Install these three pieces of push-on edge trim gasket to the bottom contour cut edge of the lower windshield panel. Roll on by hand. Locate the 30 1/4" piece of side bulb seal. Install the 30 1/4" to the top portion of the upper windshield so that the bulb is facing toward the vehicle when windshield is installed.
- E. Tighten hinge joints on all Trail Armor Fast Clamps enough to where the screws grab the nylock nuts but the clamps will still freely open and close. See Picture 4.



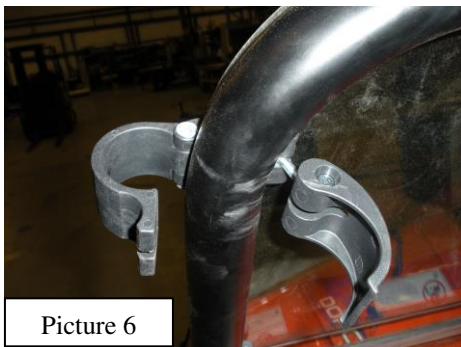
Picture 4



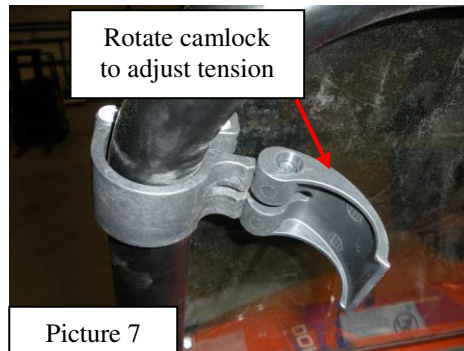
M6 screw

Picture 5

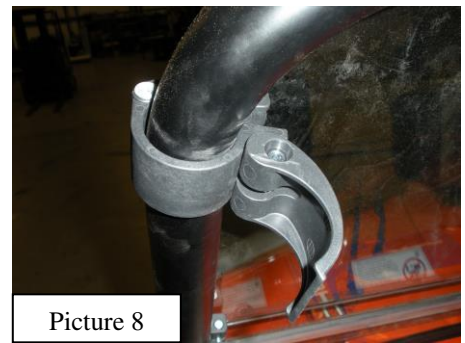
- F. Install Trail Armor Fast Clamp with the hinge tightened in step E to the inside/interior of the upper and lower windshield panels. Secure with M6 screws. See Picture 5. Tighten until rubber grommet inside the windshield's pre-drilled holes has pressure. **Do not overtighten! If you overtighten, you will pull out the brass insert and break the black spacer with the flanged edge.**
- G. With assistance, position upper windshield underneath the plastic factory panel (bolted to roll cage) so that the side bulb seal is sealed against it. Clamp into place as shown in Picture 6 – 9. Position lower windshield above the weld on the lower portion of the roll cage above hood. Push downward to align if needed. The bent lip of the bottom panel should overlay the bent lip of the upper panel. Clamp into place as shown in Picture 6 – 9. Rotate the fast clamp's camlock clockwise to adjust tension on your roll cage. Secure Fast Clamps. See Picture 10 for final install.



Picture 6



Picture 7



Picture 8



Picture 9



Picture 10