



TRAILARMOR.COM
839 HWY 2 CORINTH, MS 38834
(662) 233-5700

Installation Instructions

Polaris Sportsman 2016+ ACE 900 2017+ 500, 570 Rear Window Dust Shield TA010RWDS-ACE900

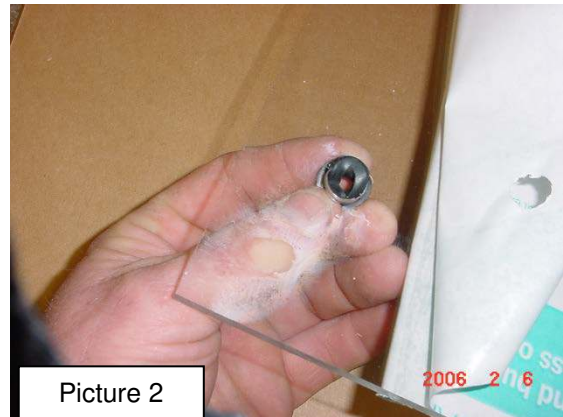
Warnings and Product Liability Disclaimer

This product is intended to be used as a cosmetic accessory under normal equipment operation and should not be depended upon or used as a safety device. Manufacturer assumes no liability for personal injury or equipment damage as the result of use or installation of this accessory. User assumes all risk. User should carefully read all instructions prior to installation.

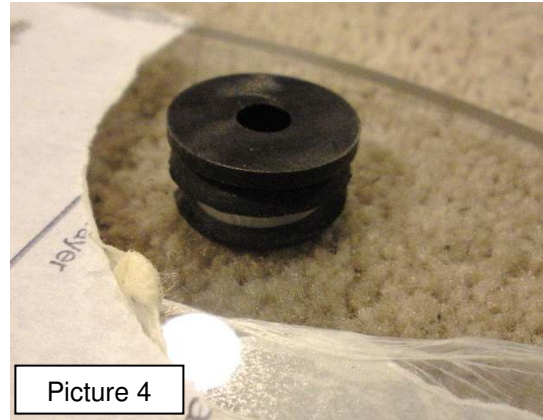
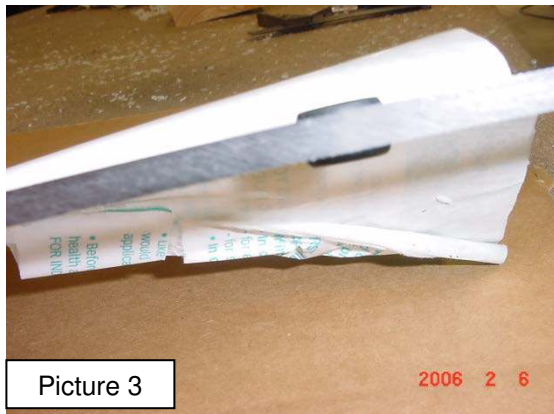
Remove your top, if applicable.

To Install Rear Window

- A. Carefully lay rear window panel on flat surface; peel back the protective sheeting around the outer edges only enough to reveal the pre-drilled mounting holes. Do not peel the protective sheeting completely at this time! See Picture 1.



- B. Insert supplied rubber grommets into the pre-drilled holes. See Picture 2. Properly installed, the grommets' shoulder edges are uniform on both sides of the window. See Picture 3.



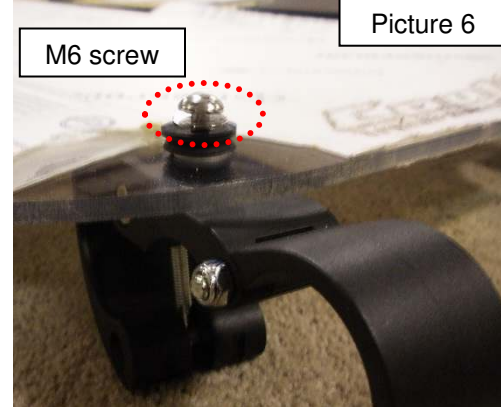
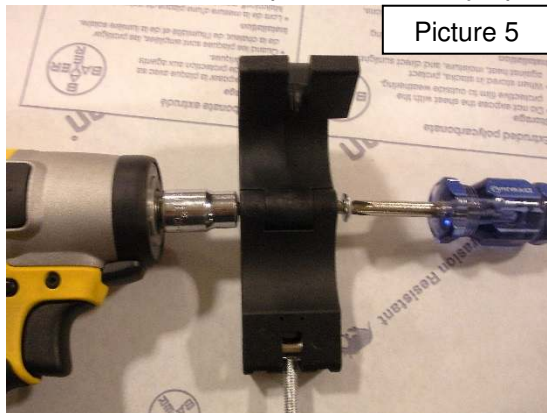
- C. Place large black plastic sleeve spacers with flanged edge into each rubber grommet inserted in the rear window panel. Flange goes on the front (exterior) side of the rear shield. See Picture 4.



TRAILARMOR.COM
839 HWY 2 CORINTH, MS 38834
(662) 233-5700

Installation Instructions

- D. Discard rectangular rubber adapter pad that comes with each quick clamp if applicable. Tighten hinge joints on all Trail Armor quick clamps enough to where the screws grab the nylock nuts but the clamps will still freely open and close. See Picture 5.



- E. Install the Trail Armor quick clamps to the inside/vehicle interior of the rear window. Secure with M6 screws. See Picture 6. Tighten until rubber grommet inside the rear window's pre-drilled mounting holes has pressure, but is still able to freely move left to right within the slotted mounting holes. **Do not overtighten! If you overtighten, you could pull out the brass insert and break the black spacer with the flanged edge or the window panel itself. See proper clamp to window orientation below.**



Correctly Installed. The quick clamp should be on the same plane as the window. *See the red parallel lines.* The fast clamp should spin freely so the rubber grommet can float in the slotted hole.



TRAILARMOR.COM
839 HWY 2 CORINTH, MS 38834
(662) 233-5700

Installation Instructions



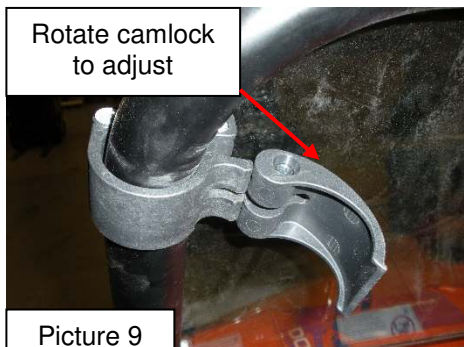
Incorrectly Installed.

The quick clamp is on a different plane as the window. *See the red non-parallel lines.* This will put the window in a bind and will cause the window to crack around the mounting point.

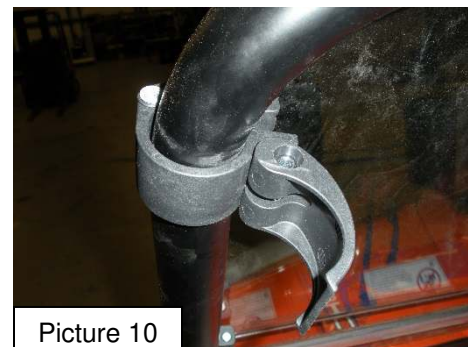
- F. Clamp rear window into place as shown in Picture 8 - 11. Rotate camlock clockwise to adjust tension on your roll cage. Position rear window where the top of the panel is flush with roll cage at the top and sides. Secure quick clamps. Again, see correctly installed versus incorrectly installed pictures above.



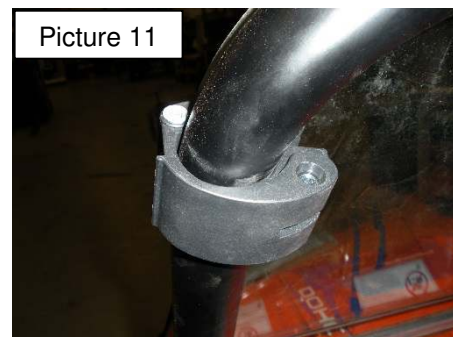
Picture 8



Picture 9



Picture 10



Picture 11



Final Install

