



TRAILARMOR.COM
839 HWY 2 CORINTH, MS 38834
(662) 462-4222

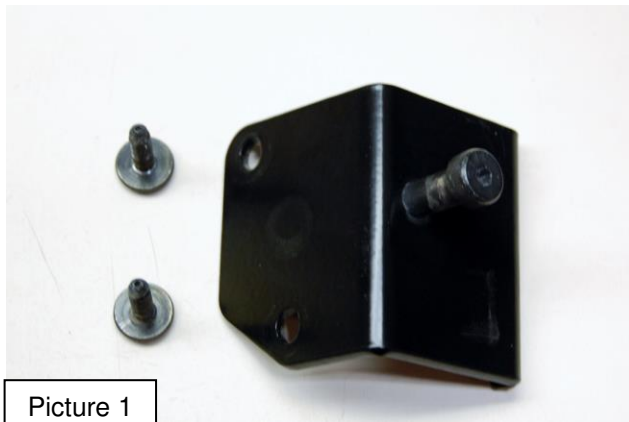
Installation Instructions

Installation Instructions for Trail Armor Polaris RZR S 900 SLIMLINE EZ ON Door Debris Shields TA001BLKSLEZ-RZR90015

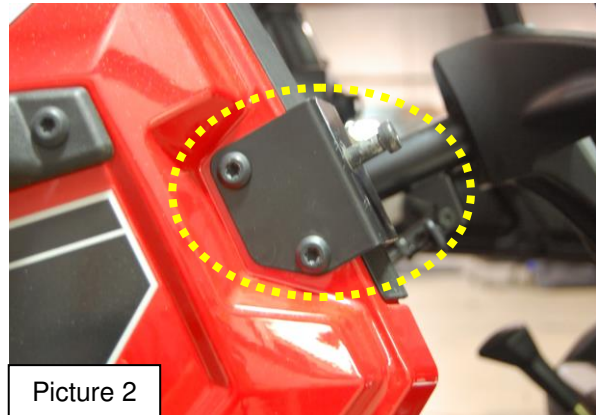
Warnings and Product Liability Disclaimer

This product is intended to be used as a cosmetic accessory under normal equipment operation and should not be depended upon or used as a safety device. Manufacturer assumes no liability for personal injury or equipment damage as the result of use or installation of this accessory. User assumes all risk. User should carefully read all instructions prior to installation.

- A. Remove OEM doors by removing the OEM screws that hold the doors on, leaving the OEM hinges in place.
- B. Remove both door strikers from the vehicle. Retain removed screws - they will be reused.
- C. Locate the driver's side front striker plate stamped 900SSL-L and install supplied 3/8 x 3/4 socket shoulder bolt onto the striker plate. Secure with 5/16 -18 nylock nut. See Picture 1. After installing the shoulder bolt on the striker plate, install the striker plate where the OEM striker was removed using the removed OEM bolts. **Do Not Over Tighten.** See Picture 2.
- D. Repeat Step C for passenger side.

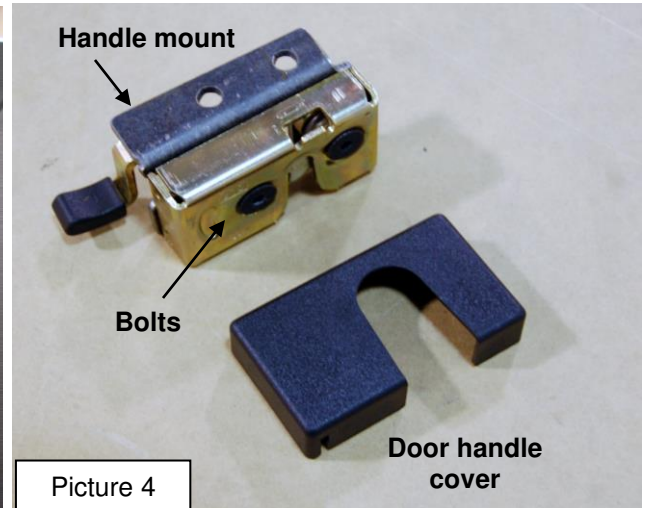


Picture 1

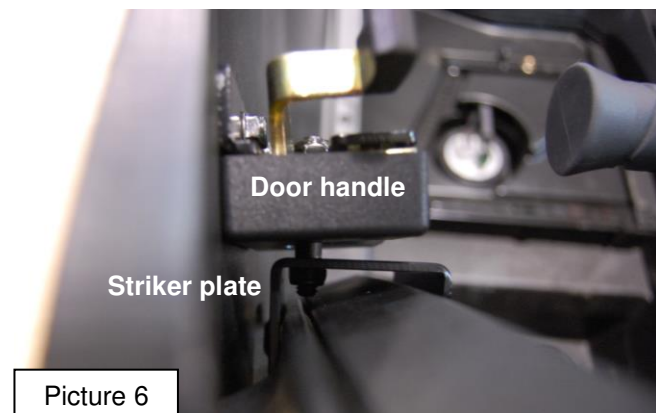
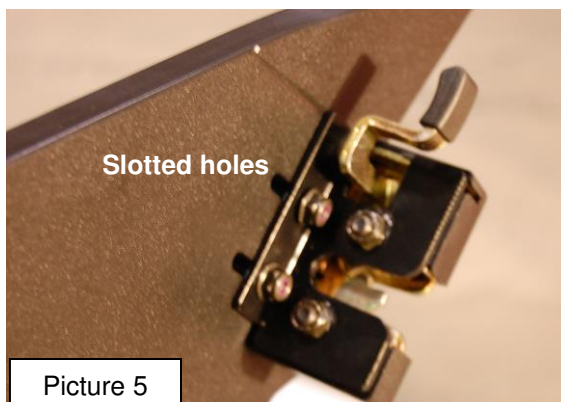


Picture 2

- E. To install the door onto the driver's side, locate the supplied hanger plates stamped 1K-4-HNG. Facing the interior of your vehicle, place the hanger plate on the **interior** side of the OEM hinge. Insert four supplied M8 -1.25 x 12mm bolts into the OEM hinges through the hanger plate – two bolts go in the upper two holes of the upper hinge and two bolts go in the upper two holes of the lower hinge. Tighten loosely. Note that there are two slots on the inside rear portion of each door panel. Place the hinges with the hanger plate installed into the slotted portion of the door panel. Hold the door panel in place. From the **outside** of the door panel, insert four supplied 1/4 - 20 x 1" button head screws through the door panel and then through the predrilled holes of the hanger plate. Secure the 1/4 - 20 x 1" button head screws with four supplied 1/4 - 20 nylock nuts. See Picture 3. Leave hardware loose for later adjustment.



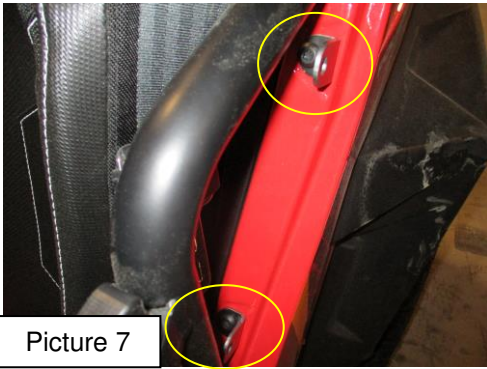
- F. Locate the driver's side door handle and door handle mount. To start door handle installation, carefully remove plastic door handle cover. Insert two 5/16 - 18 x 1 1/4" flat head bolts through the front of the handle. Place handle mount over bolt ends. Install two supplied 5/16 - 18 nylock nuts over bolt ends. Tighten securely. See Picture 4.
- G. After installing the door handle onto the door handle mount, carefully clip the plastic cover onto the handle. From the **outside** of the door, insert two supplied 1/4 - 20 x 1" button head screws into the two slotted holes at the front upper portion of the door panel through the door handle mount. Secure with supplied 1/4 - 20 nylock nuts. Loosely tighten. See Picture 5. Once door handle is installed onto door panel, close door panel so that it latches to striker bolt. Before tightening door handle securely, be sure there is an even gap between the door handle face and striker plate. See Picture 6. **Note: Adjust door if needed. To adjust door, raise or lower the pitch of the door to achieve proper fitment of door. Door panel should open and close freely without any drag. You can also move your door handle along the slotted holes in the door panel - if the door handle is too far towards the front of the vehicle, it will rub the striker plate and be hard to close. If the door handle is too far towards the rear of the vehicle, the door handle will hit the head of the striker bolt and door will not close. Because each vehicle is different, you will need to adjust your door to find the "sweet spot" that ensures proper closure.** Once door panel is properly aligned and door panel closes correctly, tighten all installed hardware.



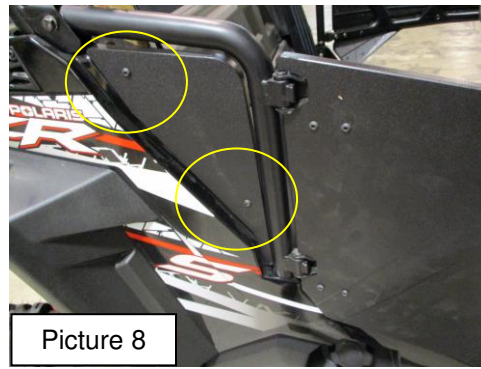


TRAILARMOR.COM
839 HWY 2 CORINTH, MS 38834
(662) 462-4222

Installation Instructions



Picture 7



Picture 8



Picture 9

- H. To install the rear filler panels, locate the driver's side panel and two of the filler panel metal brackets. Remove two OEM screws from rear body panel. Insert each of the OEM screws through the metal brackets and back into the holes where each were removed. See Picture 7. Insert two supplied $\frac{1}{4}$ -20 x 1" button head screws through the predrilled holes of the filler panel and secure with two $\frac{1}{4}$ -20 nylock nuts. See Picture 8. Tighten installed hardware. See Picture 9 for full install.
- I. Repeat for passenger side.