

INSTALLATION INSTRUCTIONS

CARRIER BEARING 2024+ XP1000 4 SEAT



TOOLS REQUIRED

Jack stands
Jack
Bearing puller
Bearing press
15mm 17mm 13mm wrench
10mm 12mm 13mm 15mm
17mm socket
T40 torx
6mm Allen wrench
Torque wrench
2 or 3 jaw gear puller
1.5" x 8" pipe/sleeve
Hammer

CARRIER BEARING, BRASS RING, THREADLOCKER



INSTALLATION INSTRUCTIONS

CARRIER BEARING 2024+ XP1000 4 SEAT



REMOVAL OF OE CARRIER BEARING

REMOVAL STEP 1:

Remove the skid plates, lift rear tires off the ground & secure with jack stands on the frame.

REMOVAL STEP 2:

Loosen 2X allen 6mm from the pinch clamp on the driveline at the transmission.

REMOVAL STEP 3:

Remove the safety hoop from the driveline (T40). You will re-install this later so note the position & orientation.

REMOVAL STEP 4:

Remove 2X 15mm socket carrier bearing bolts.

REMOVAL STEP 5:

Remove the rear section of the driveline from the vehicle including the carrier bearing and carrier bearing hardware. The front section of the driveline does not need to be removed.

INSTALLATION OF SANDCRAFT CARRIER BEARING

NOTE: You now need to install the SANDCRAFT Carrier Bearing onto the OE drive shaft before re installing it into the vehicle. Make sure all surfaces are clean and free of contaminants before installing.

INSTALLATION STEP 1:

Disassemble the SANDCRAFT carrier bearing carrier from the carrier bearing base plate by removing 2X bolts. (size 17mm).

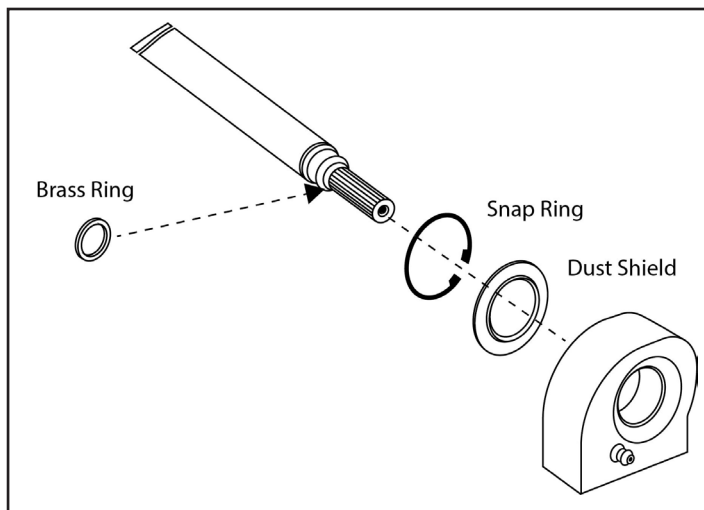
INSTALLATION STEP 2:

Supplied is a brass ring. This brass ring goes on the OE driveline before the bearing installation. Pay attention to the chamfer on the brass ring. The chamfer side goes on first so that it is against the driveline shoulder. Using a press, install the new carrier bearing with green threadlocker with the snap ring facing the brass ring. Use green threadlocker on the inner surface of bearing and on the shoulder of the driveshaft. Press bearing until it is fully seated against the brass ring.

!!TAKE CARE WHEN PRESSING THE CARRIER BEARING ONTO THE SHAFT. USE A PIPE OR TUBE AND CAREFULLY PRESS THE BEARING INTO PLACE. APPLY PRESSURE ONLY TO THE INNER RACE OR YOU WILL DAMAGE THE BEARING!!

Be careful not to over press the bearing – this will cause excessive side load pressure and potentially damage bearing. The snap ring side of the bearing housing must go on first. The snap ring side of the bearing housing will be pressed up against the brass ring.

THIS IS CRITICAL



INSTALLATION STEP 3:

Now install the rear section of the OE driveline into the vehicle using the same steps from when removed it. NOTE: Leave the Carrier Bearing baseplate off the assembly off at this time.

INSTALLATION STEP 4:

Align the paint marks on OE driveline and connect the rear driveline to the front driveline.

INSTALLATION STEP 5:

Connect the rear driveline to the transmission output.

INSTALLATION STEP 6:

Install Carrier Bearing Base Plates and hardware 25 ft. lbs. torque. Follow the supplied diagram for stacking order.

INSTALLATION STEP 7:

Re install the safety hoop, follow manufacturer torque specs.

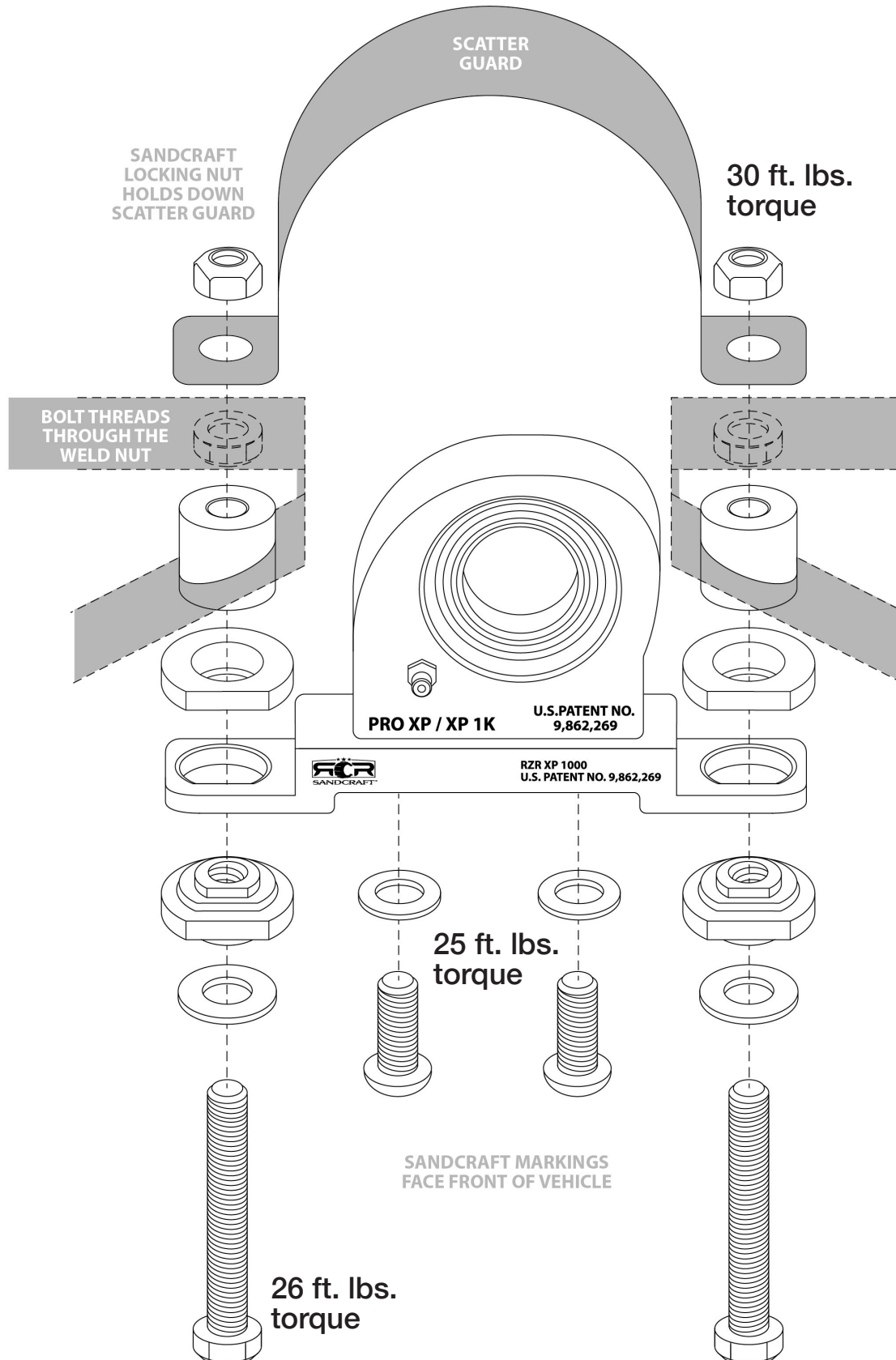
INSTALLATION STEP 8:

Lower the vehicle and re install skid plates.



INSTALLATION INSTRUCTIONS

CARRIER BEARING 2024+ XP1000 4 SEAT



INSTALLATION INSTRUCTIONS

CARRIER BEARING 2024+ XP1000 4 SEAT



**PLEASE CONTACT US AT (480)-539-4438 OR
SANDCRAFT@SANDCRAFTMOTORSPORTS.COM
IF YOU HAVE ANY QUESTIONS.**